

Questions

There were 3 main questions asked about each individual



Living Situation?

Where does the individual live now?

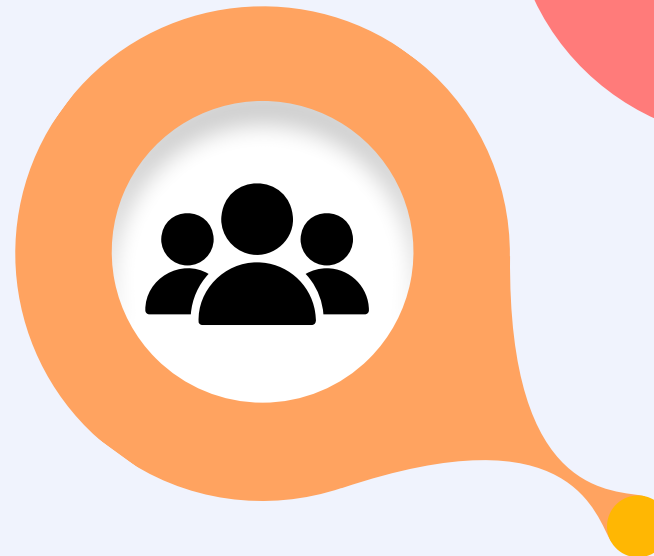


Homeless?

Have they been homeless?
If so, why?

Officers

14 post-16 team officers assisted with the review



Contact?

How often will an officer see or have contact with the individual?

Individuals

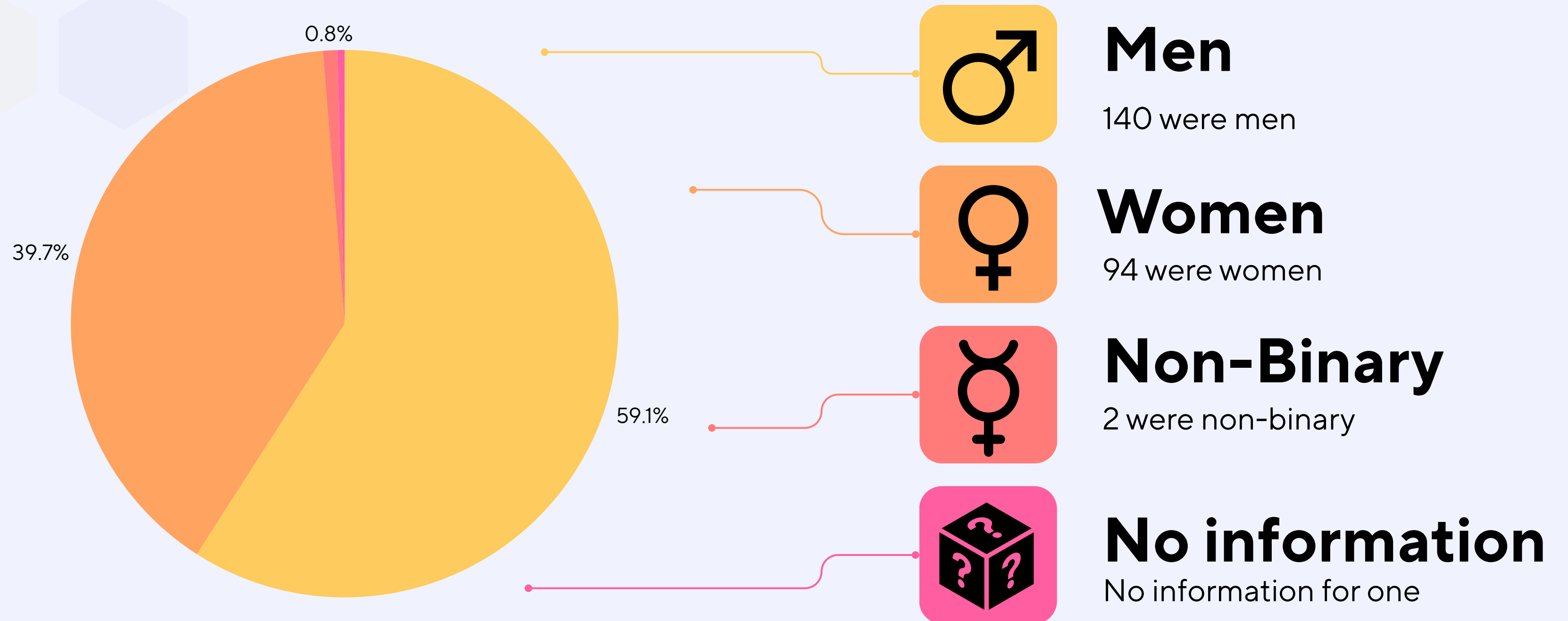
A review document was provided that outlined 237 individual details regarding who the post-16 team supports



16 PLUS QUESTIONNAIRE

Individual Details

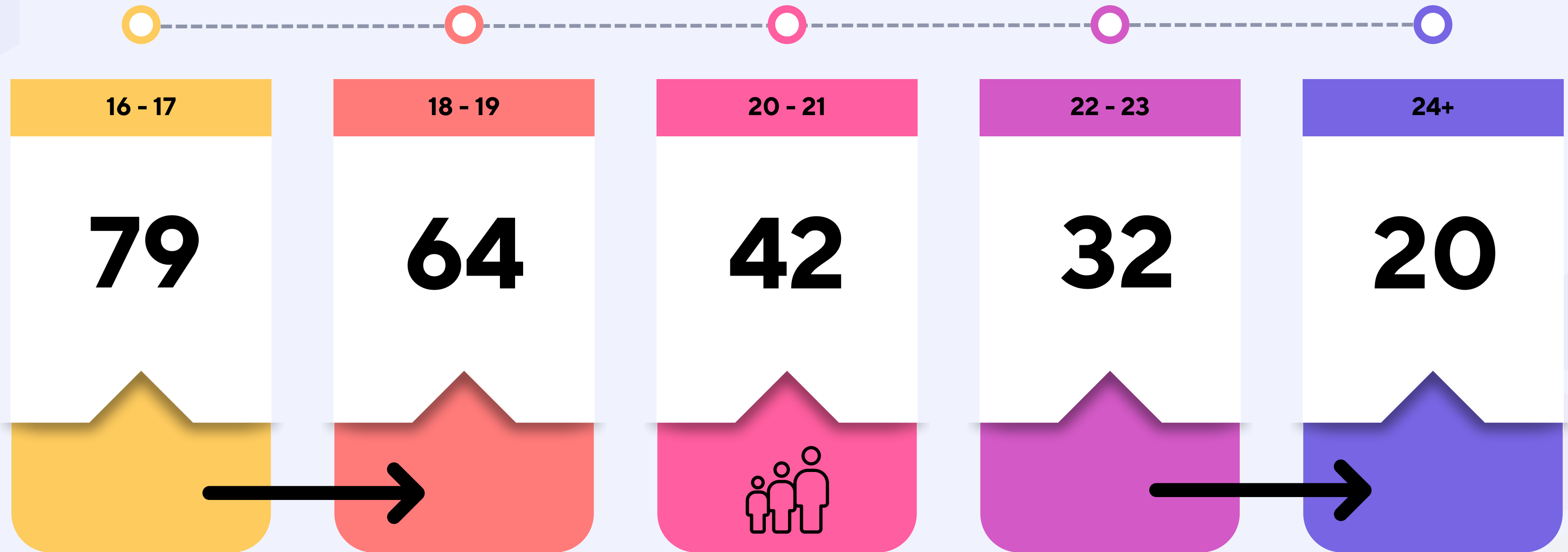
In the reviewed document, 237 individuals were being supported by the post-16 team.



- One individual is in the process of transitioning from female to male; however, this has not yet been officially confirmed.

Age Category

The average age of individuals receiving support is 19.71 years, below everyone is divided into age categories



Work Allocation

Below shows how the cases are allocated per officer:



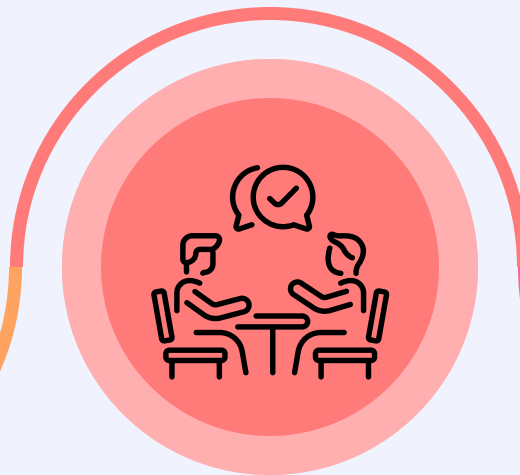
Meeting Frequency

The information below provides an overview of how frequently individuals meet with or have contact with post-16 team staff.

Monthly is the most common meeting frequency.



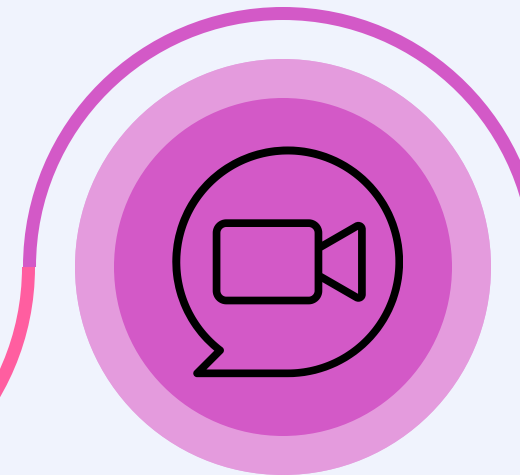
Most are seen on an 'as needed' basis, that is, as the individual requires.



4 - 6 weeks is the second most common in terms of meetings.



Some individuals are seen every two days to respond to their needs.



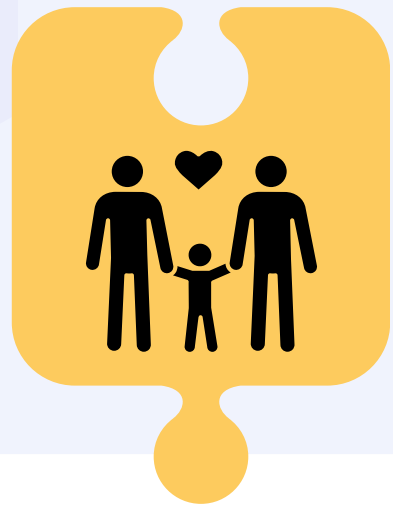
Digital contact is a popular way to meet.



Unfortunately, there are problems with getting through to a number of individuals, but the officers continue to try to make contact.

Living Category

The living situations of the 237 individuals can be grouped into broad categories as shown below:



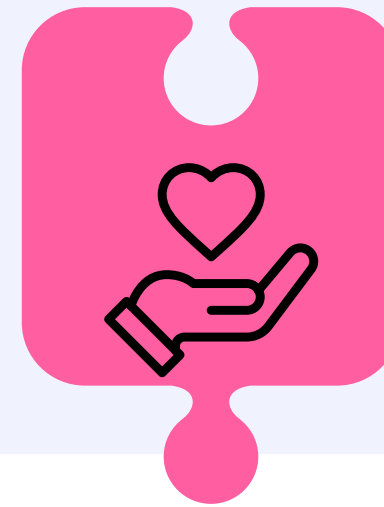
**67 living with
parents /
extended
family**



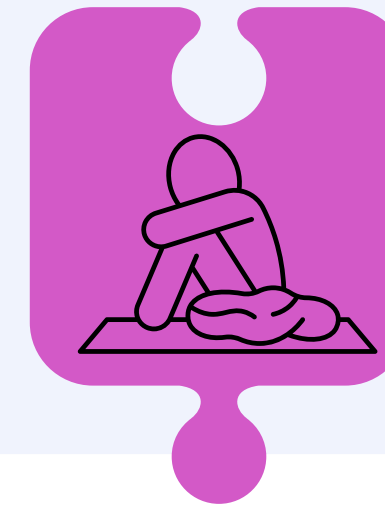
**37 living with
a foster family**



**70 living
independently**



**36 in supportive
accommodation
/ Anheddau/
Bed Space / Byw
Bywiog / GISDA
/ Gorwel / Pen
Dinas / Hostel**



**6 in different
accommodation
each night /
hotel / homeless**



**4 moved to
University**



**2 in a
residential
settings**



3 in jail



**12 in prison
have either
been closed
or stopped
engaging**

The most common place for individuals to live:



38

BANGOR



11

**BLAENAU
FFESTINIOG**

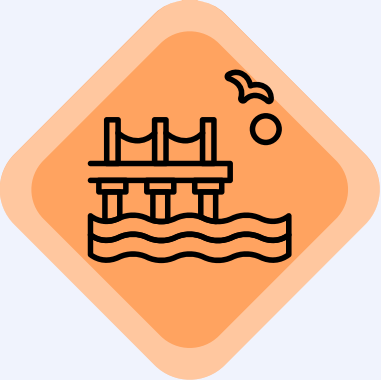


6

CARDIFF

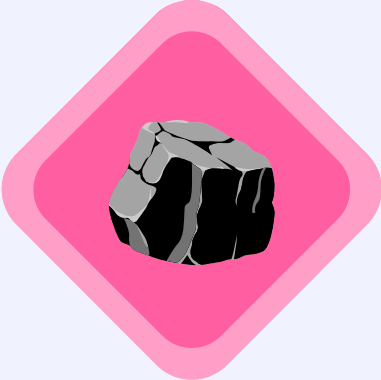
CAERNARFON

45



PWLLHELI

16



PORTHMADOG

11

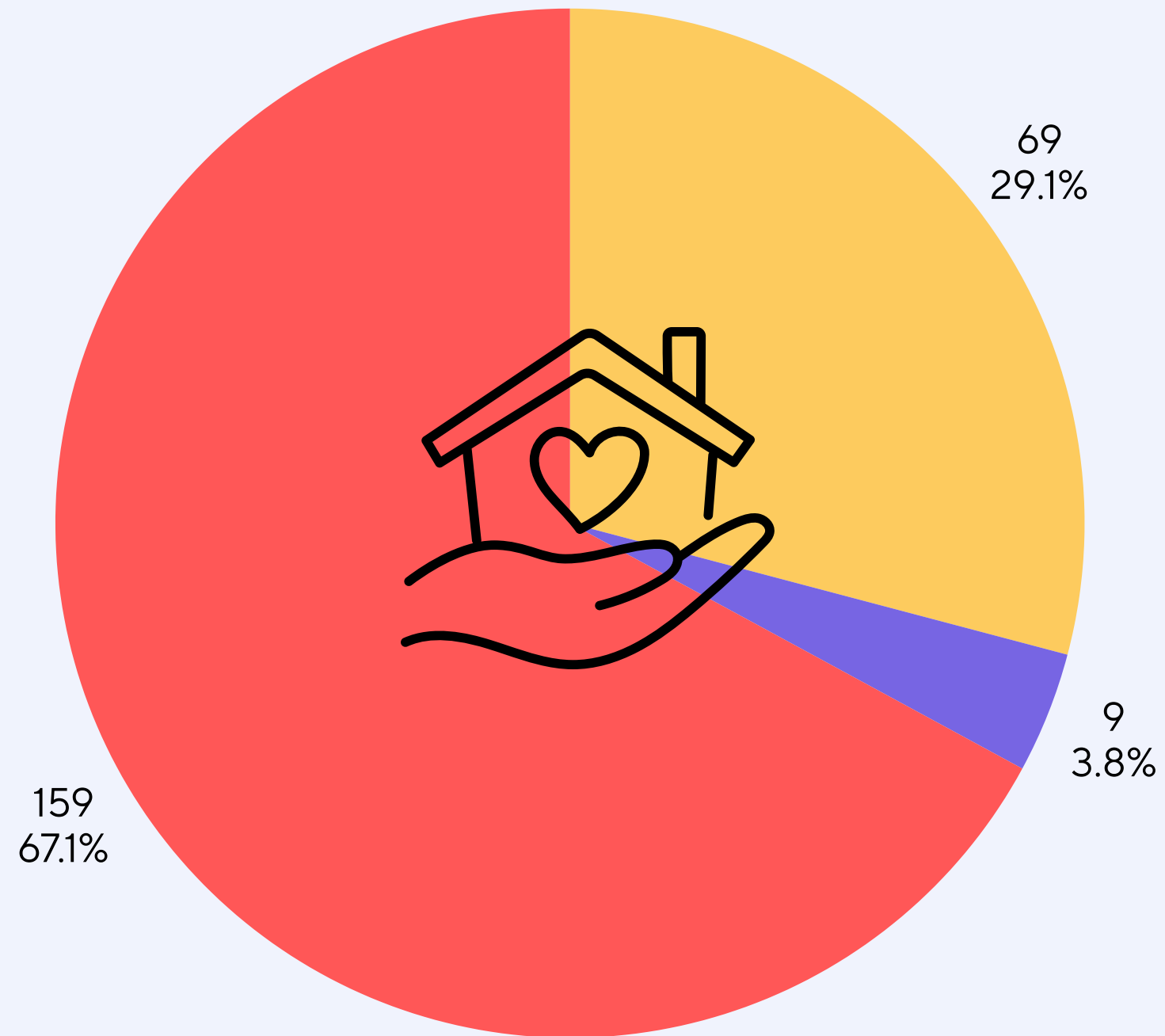


Homeless

It was noted that 69 had presented as homeless during their time with the post-16 team

Unclear whether 9 have presented as homeless or not

159 noted that they had never presented themselves as homeless



Reasons for Homelessness

